

Quick Reference Guide

EdgeConnect™ Devices



Productivity Benefits

- **Fastest devices to terminate** on the market
- **Screwless terminations** provide a consistent, reliable connection in harsh environments

Reduce Downtime

- **Improve installation time by 65-80%**
- **No need for torque driver** results in less time on the job

Kellems® Wire Management Solutions



Productivity Benefits

- **Conforms to shape of cable** removing strain from individual conductors and minimizes electrical accidents and power failures
- **Easy-to-install** reposition without special tools to accommodate equipment relocation

Reduce Downtime

- **Increase life** where cables are subjected to bending and flexing
- **Strain relief bushings** seal out oil and water and other contaminants that can short out an electrical system

Advantage™ Series Pin & Sleeve Devices



Productivity Benefits

- **Approved as disconnecting means** for both motor circuits and branch circuits
- **Visually verify power status** with LED indicators

Reduce Downtime

- **Able to disconnect at point of use**
- **Prewire and test** replacement motors **prior to motor failure**, significantly reducing downtime with this plug-and-play technology

inSIGHT™ Disconnects with LEDs



Productivity Benefits

- **Visually communicates electrical status** of the switch by phase prior to removing the cover to **improve safety procedures**

Reduce Downtime

- **Six highly visible integral phase identification LEDs provide visual indication** of presence of power

MotorQuick™



Productivity Benefits

- Hubbell MotorQuick™ is a **prewired system for fast installation**
- The enclosures are **certified by NSF and are IP69K** rated for use in high pressure washdown
- **Safely make quick moves and changes** on the plant floor

Reduce Downtime

- **Significantly reduces motor replacement time** by combining plug-and-play technology and Hubbell motor disconnects
- Facilitates **fast repair and replacement** of critical equipment

Watertight Wiring Devices



Productivity Benefits

- Ensure durability with **superior impact and chemical resistance**
- **Superior water ingress protection:** UL Type 4, 4X, 6, 6P; IP65, IP66, IP67, IP69K
- Green and red LEDs within housing **assembly illuminate to indicate wiring condition** for rapid visual status check

Reduce Downtime

- **Protection from water ingress** ensures connection integrity
- **Visual indication** to help installers easily see the LED indicators to **show status or condition** of the device

Linkosity®



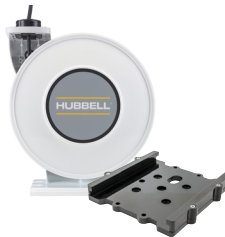
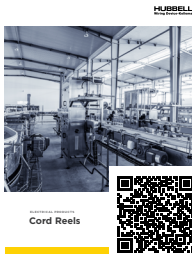
Productivity Benefits

- Modular design which offers a cost effective alternative to traditional wiring methods.
- Plug and play method that enables fast installation and high technical performance
- Connectivity System Components - UL type 4X listed

Reduce Downtime

- Facilitates fast repair and replacement of critical equipment
- Significantly reduces replacement time with plug and play technology

inREACH™ Cord Reels



Productivity Benefits

- Mounting bracket **decreases or eliminates the additional labor** associated with installing reels

Reduce Downtime

- Ergonomically manage cords to reduce tripping hazards and equipment damage

Twist-Lock® Circuit Testers



Productivity Benefits

- **Quickly diagnose** miswiring situation or application
- **No measurement readings** to interpret

Reduce Downtime

- Keep plant running by **recognizing wiring issues before they escalate** and potentially damage equipment

Additional Resources



Wiring Device Solutions for Strategic Manufacturing Facilities

A go-to resource to help manufacturing facilities quickly find wiring devices they can count on to support production, safety, and reliability.



A proud member of the Hubbell family.

©2023 Hubbell Incorporated. All rights reserved.
Hubbell and the Hubbell logo are registered trademarks or trademarks of Hubbell Incorporated.
All other trademarks are the property of their respective owners.
hubbell.com/wiringdevice-kellems
40 Waterview Drive, Shelton, CT 06484 | 800-288-6000